

# Setting Up Your Zoom Technology for Live Pathful Connections

Last Modified on 10/17/2024 12:39 pm EDT

Please review the instructions to ensure your technology is ready for your live Pathful session. We use Zoom Cloud Meetings as our video tool. For all technical requirements for Zoom, visit: <https://support.zoom.us/hc/en-us>

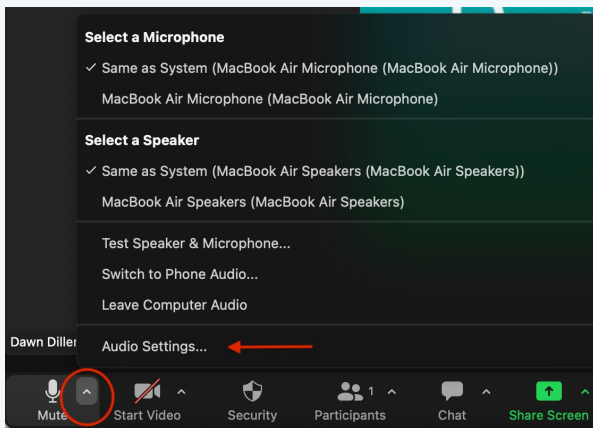
If you are unable to complete a step, email [support@pathful.com](mailto:support@pathful.com) to schedule a quick technology setup session to make sure you are prepared for your session.

**1. Installing:** If you have already used Zoom before on your computer or device, you can skip this step.

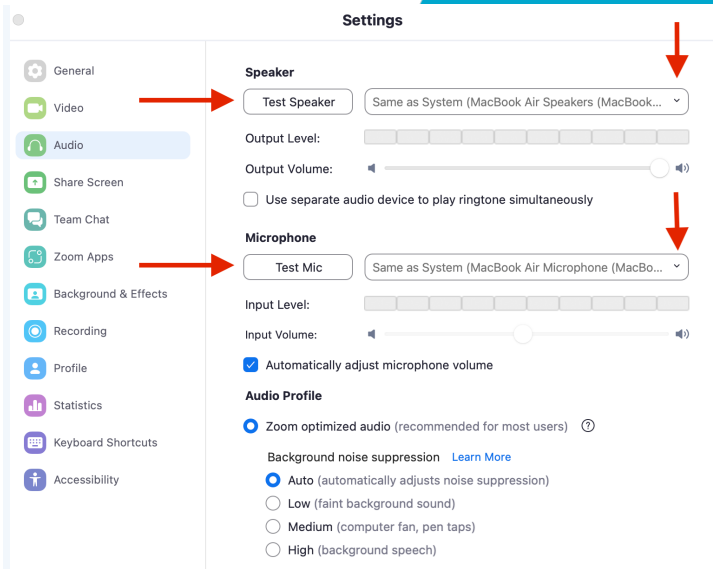
If you need to download or make sure you have the latest version, you can download and install it here: [Zoom Download Center](#) or [Chrome Extension](#).

**2. Check your Connection:** Go to <http://zoom.us/test> to get a button for a test meeting.

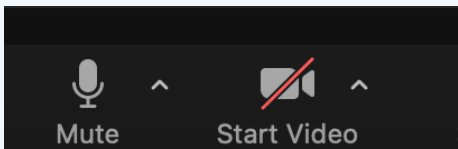
**3. Test Speaker and Microphone on the Computer:** Click on the audio menu and select Audio Settings



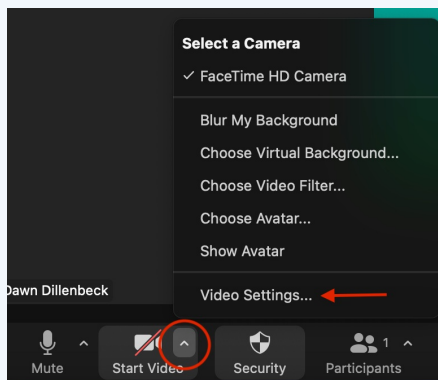
From this screen you can test your speaker and microphone. At each step of the way, you can select a different source. You may need to do this if you have external speakers or microphones connected:



4. **Test Video:** You should see yourself if the camera is working. If not, make sure there is a camera icon in the lower left-hand corner of your window. If there is no camera, Zoom does not find any camera and you will have to check your camera connection. If there is a red slash, click on start video to turn your camera on.

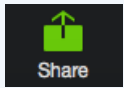


If you need to switch to a different camera or edit video settings, you can access the Video Settings menu here:

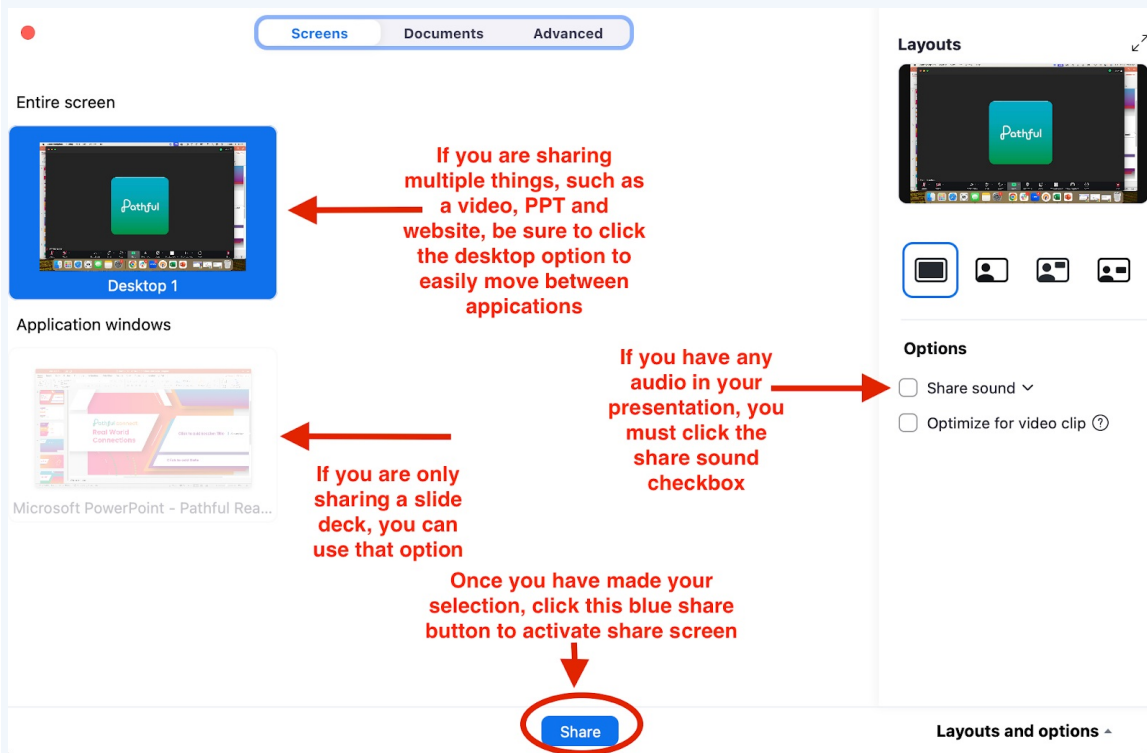


**Common Issue:** Make sure all other applications that may use your camera are closed. This may include the software that came with your camera.

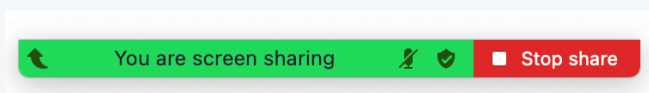
**5. Sharing your Screen:** Most presenters and sometimes classrooms or students will want to share what is on their computer screen to everyone else. To do this, click on the Share button at the bottom middle of your window.



Click on that icon and take note of the next window:



**6. Exit Screen Sharing:** This will bring you back to full screen again for discussion, there is a Stop Share at the top of your monitor (not at the top of any particular window).



**7. Test:** If you would like to test your classroom configuration with our support team, please reach out to [support@pathful.com](mailto:support@pathful.com).

